

LISTERIA AND BLUE BELL ICE CREAM

Contaminated Production Facilities and Illnesses Linked to Blue Bell Creameries

CDC recommends to not eat, serve, or sell any Blue Bell brand products. This complicated investigation of a listeriosis outbreak involves serious illnesses from 2010 through 2015 linked to two Blue Bell production facilities.

Arizona

- ▶ 1 case linked to ice cream made in Oklahoma facility

Kansas

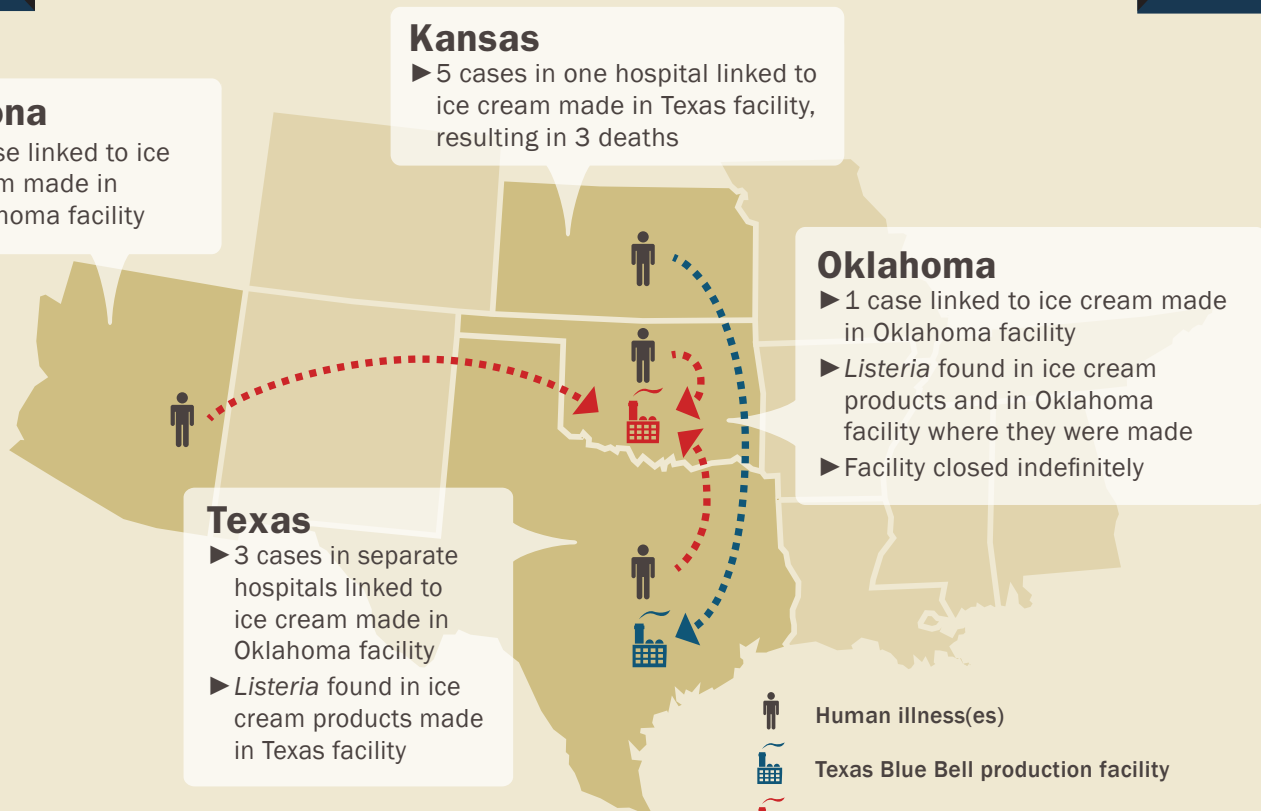
- ▶ 5 cases in one hospital linked to ice cream made in Texas facility, resulting in 3 deaths

Oklahoma

- ▶ 1 case linked to ice cream made in Oklahoma facility
- ▶ *Listeria* found in ice cream products and in Oklahoma facility where they were made
- ▶ Facility closed indefinitely

Texas

- ▶ 3 cases in separate hospitals linked to ice cream made in Oklahoma facility
- ▶ *Listeria* found in ice cream products made in Texas facility



- Human illness(es)
- Texas Blue Bell production facility
- Oklahoma Blue Bell production facility
- Illness(es) linked to Texas facility
- Illness(es) linked to Oklahoma facility



U.S. Department of Health and Human Services
Centers for Disease Control and Prevention

Learn more: www.cdc.gov/listeria/bluebell